

From: [REDACTED]
To: [Norwich to Tilbury](#)
Subject: National Grid N2T Consultation Deficiencies
Date: 25 September 2025 17:10:55
Attachments: [LanghamTargetedConsultation.docx](#)

[REDACTED]

Dear Sir

I am writing to highlight deficiencies in National Grid's Norwich to Tilbury consultation process. The proposal was presented as a preferred option in 2022. No other options have been presented subsequently for consultation. Consultation responses calling for alternatives to be presented have been ignored.

In our Parish we have many examples of the flaws in the process, which we would be pleased to discuss with you.

However, we felt it expedient to draw the Targeted Consultation in particular to your attention, it being a) the most recent consultation, and b) the one of all the Targeted Consultations along the route with the most dramatic impact and harm. Please therefore find attached a short paper which details the failings of that consultation alone in Langham Parish.

It is clear that the consultation process has been far below the 'adequate bar' and the DCO cannot be accepted for examination. If accepted, the risk of legal challenge is significant.

We would be delighted to supply you with further information if required.

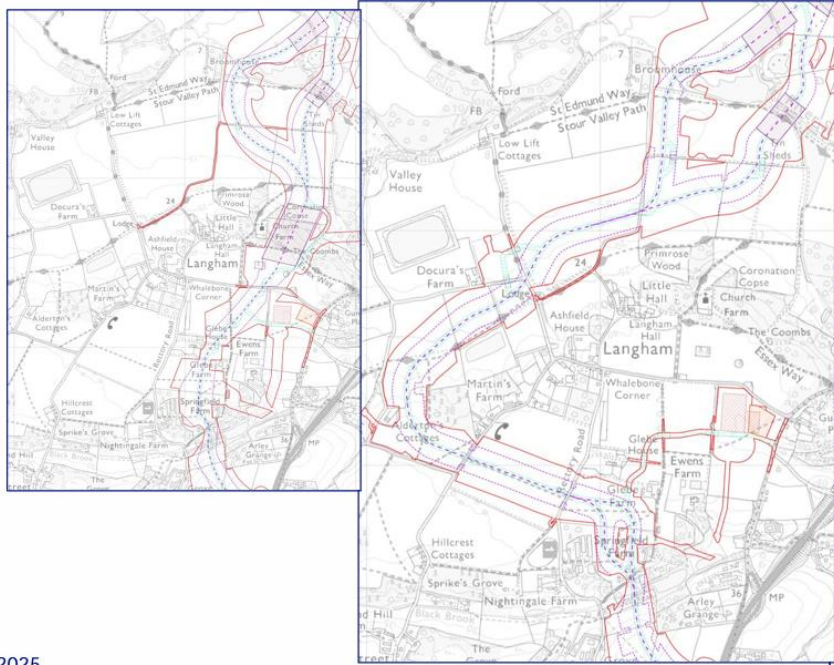
Kind regards
Paul Armstrong

Paul Armstrong
Chairman
Langham Parish Council
[REDACTED]
[REDACTED] [@langhamparishcouncil.co.uk](mailto:[REDACTED]@langhamparishcouncil.co.uk)

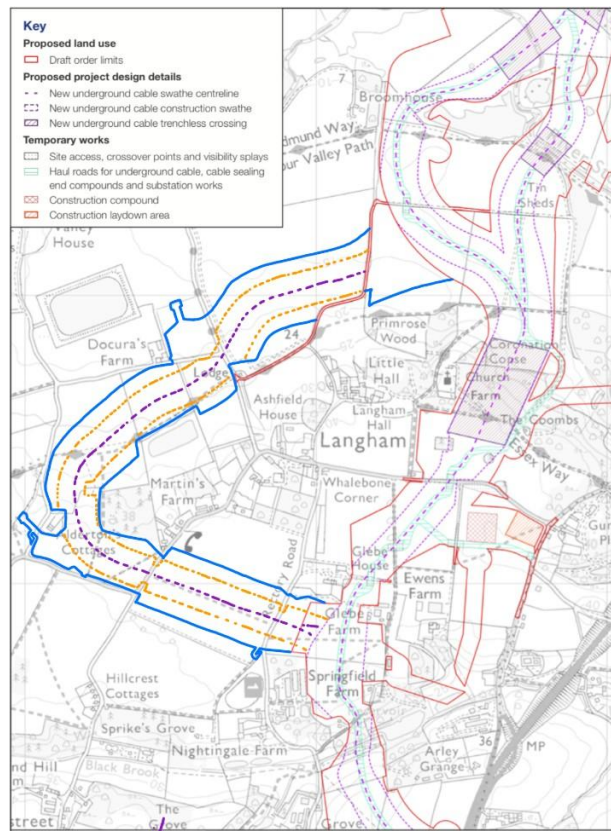
Under the General Data Protection Regulations we have a legal duty to protect any information we collect from you or others. The content of this email and any attachments may be privileged or confidential and intended for the exclusive use of the recipient(s) specified in the message only. It is strictly forbidden to share any part of this message with any third party, without the written consent of the sender. If you have received this message by

Targeted Consultations case study: Langham, “Essex 1”

Langham, “Essex 1”, is the parish most dramatically affected by the targeted consultations, with very significant impacts and harms caused by the new proposals. We therefore focus on Langham as a case study which highlights problems with the way the targeted consultations have been run.



NGET maps: Statutory Consultation proposal 2024, left; targeted consultation proposal 2025, right.



New routing overlaid on map with 2024 route

We are told¹ that NGET is proposing the very significant change at Langham in response to consultation feedback which apparently asked NGET to consider:

- *“reducing impact on areas of mature woodland and the associated protected species*
- *minimising impact on rural business activities*
- *avoiding the removal of trees along tree lined access roads where practicable.”*

Yet as highlighted above, the responses to the Statutory Consultation remain unpublished. Without published feedback, it is impossible for stakeholders to establish whether what NGET says is correct.

The result of the changes, see map below, is a far greater impact on farmland, businesses, habitat and residents. It does not reflect attempts at reasonable discussion with NGET by local landowners. The harm caused by the new proposal is self-evidently severe given the far longer route. The impact of the changes proposed in the targeted consultation on just one farm, the Langham Hall Estate, is as follows:

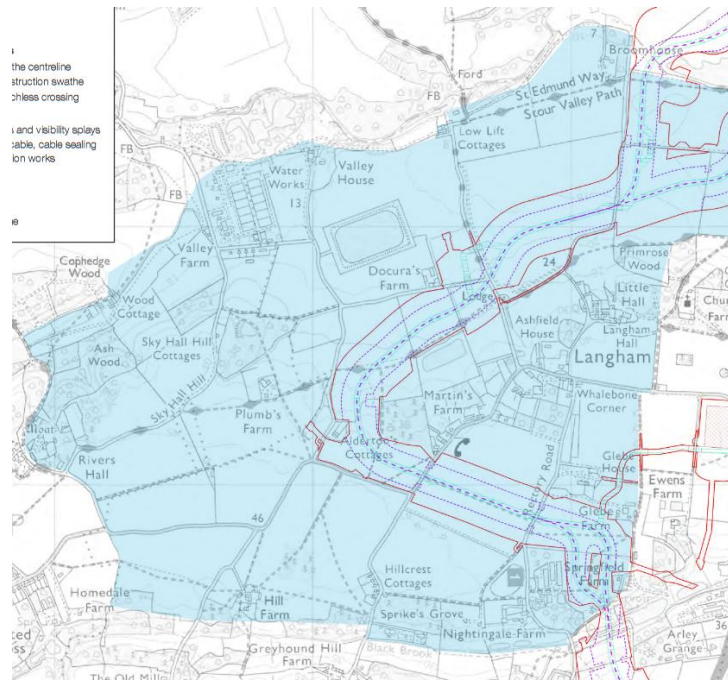
- The farm will now be destroyed and unworkable in its entirety for the duration of the works and possibly forever thereafter.
- Trenching and tunnelling will shut down the equestrian business, simulated shoot, fishing and events.
- The changes will uproot cricket bat willows, managed and unmanaged protected land.
- The new proposals will destroy the natural capital and serenity of the river, wetlands, water meadows field margins and hedgerows, and all the associated wildlife.
- The glamping site will have to close down.

NGET’s own environmental assessment² says harms will increase, saying this of the changes to Agriculture & Soils, “The proposed change would increase the length of underground cabling and therefore would increase the potential for soil damage through increased disturbance.” It also notes an increased risk of a potential effect to groundwater.

The map above illustrates very starkly how extreme the changes are in the Langham area and how much longer the undergrounding swathe now is – thus causing greater harm and affecting more residents.

¹ <https://www.nationalgrid.com/electricity-transmission/network-and-infrastructure/infrastructure-projects/norwich-to-tilbury/public-consultation-and-programme>

² <https://www.nationalgrid.com/electricity-transmission/document/157411/download>



'Community consultation zone' at Langham, Essex

NGET has determined that community consultation zones³ "have been created following the principle that each consultation zone should be appropriate and proportionate in relation to the type and potential impact of the change." NGET states that a letter was sent to residents within the blue zone. **However, the residents of the Hillcrest Cottages area in the zone did not receive postal alerts.**

There are three examples in Langham alone, which illustrate that National Grid's chosen zone is not appropriate and proportionate:

Example 1: numerous residents not notified by NGET to the south of the swathe

The consultation zone only extends 0.5km south of the swathe and excludes all the properties south of Black Brook and a further 0.5k south (shown below). This is despite NGET writing to residents 1km from the swathe previously. The impact of these changes in the targeted consultation will most certainly be felt by the residents within 1km of the project and they should be consulted.



Area 0.5km-1km south of the swathe shows properties excluded from consultation zone

³ <https://www.nationalgrid.com/electricity-transmission/document/157186/download>

Example 2: area of changes excluded from consultation zone



2025 change to compound and laydown area



Area excluded from consultation zone.

Example 3: directly impacted landowners not notified by NGET



The change circled above may look insignificant but, for the owners of [REDACTED], the Mathers, it will result in a greater impact on the property. Despite this, the area has been inexplicably excluded from the 'community consultation' area.

Unlike in the Statutory Consultation, when the Mathers would have been left with a small area unaffected where their two acres meet Grove Hill, now the whole of the two acres appears to be affected. The consultation document informs the Mathers that there are no changes to the south of Blackbrook, but that is incorrect.

Two acres of their land border the Blackbrook, to the south of it, and the red line draft order limit in the new proposal takes in more land than before. No explanation is given for this. Presumably due to being excluded from the community consultation zone, the Mathers were not notified by mail about the consultations despite the changes resulting in two acres of trees, shrubs and their drive being laid to waste – they simply received the standard email.